

Needham-Wellesley I-95 Add-A-Lane

Highland Avenue Detour Project Update

September 21, 2016

Agenda

- Welcome and Introductions
- Project Overview and Goals
- Upcoming Work
 - Highland Ave to I-95 Ramp Closure
 - Route 9 Traffic Shift
 - Highland Ave Demolition
- Ongoing Public Involvement

Project Goals and Overview

Project Goals

- Improve safety and functionality of I-95:
 - Widen mainline highway to add one travel lane in each direction
 - Restore breakdown lane
 - Upgrade interchanges at Route 9 and Highland Avenue to:
 - Decrease congestion
 - Pull vehicles back to the mainline

Project Status

- Construction started: January, 2015
- Transitioning to stage 3 of 5
 - *October 2016-November 2017*
- Focus on:
 - Completing Highland Avenue Bridge
 - Completing I-95 over Route 9 Bridge
 - Ongoing installation of sound barrier

Project Components - I

- Travel lane and shoulder along the median
- New interchange at Kendrick Street
- Collector/distributor roads connecting Kendrick Street and Highland Avenue
- Route 9 and Highland Avenue interchanges



Project Components - II

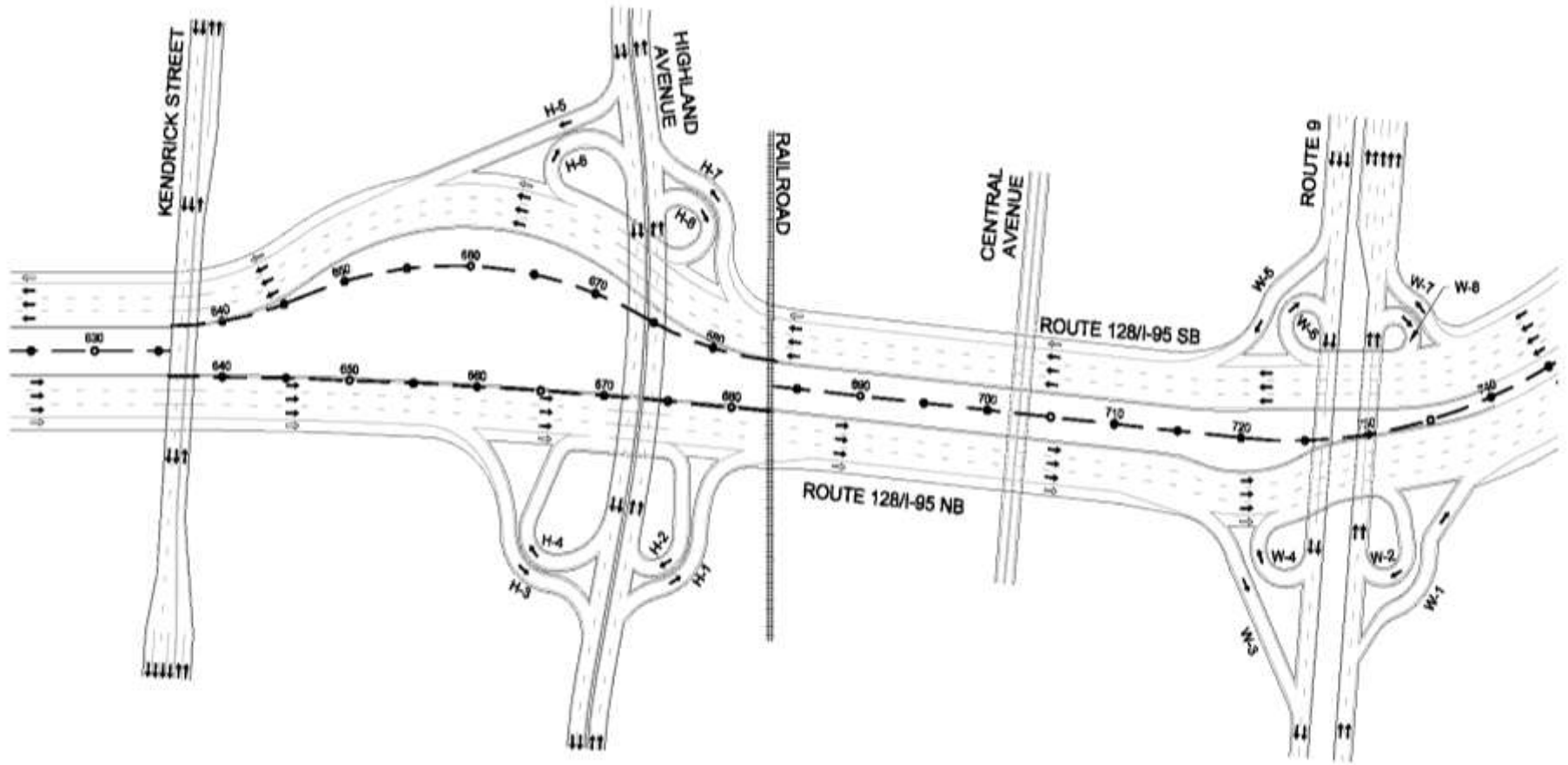
- 7 new noise barriers
- Widen I-95 bridge over Central Avenue
- 4 new bridges:
 - Kendrick Street over I-95
 - Flyover ramp at the Kendrick Street interchange
 - Highland Avenue over Route 128
 - I-95 over Route 9.
- Removed disused RR bridge



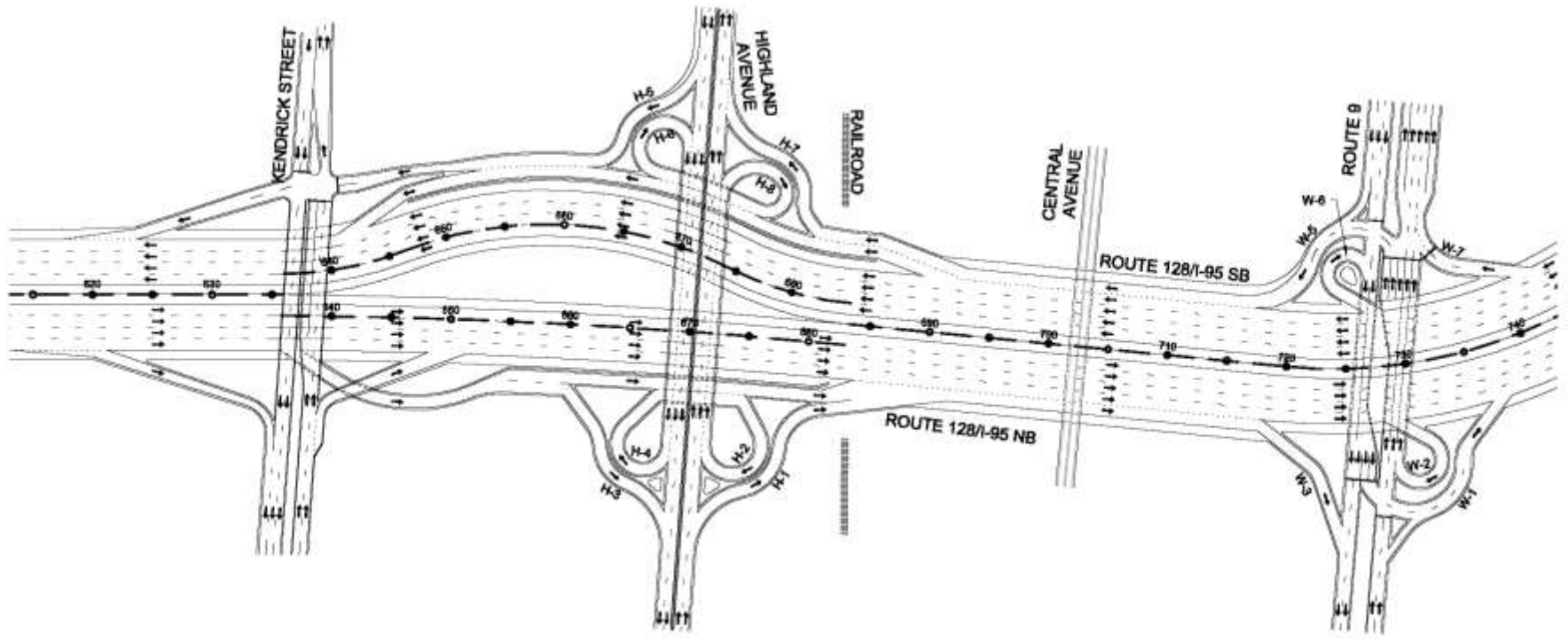
Project Limits of Work



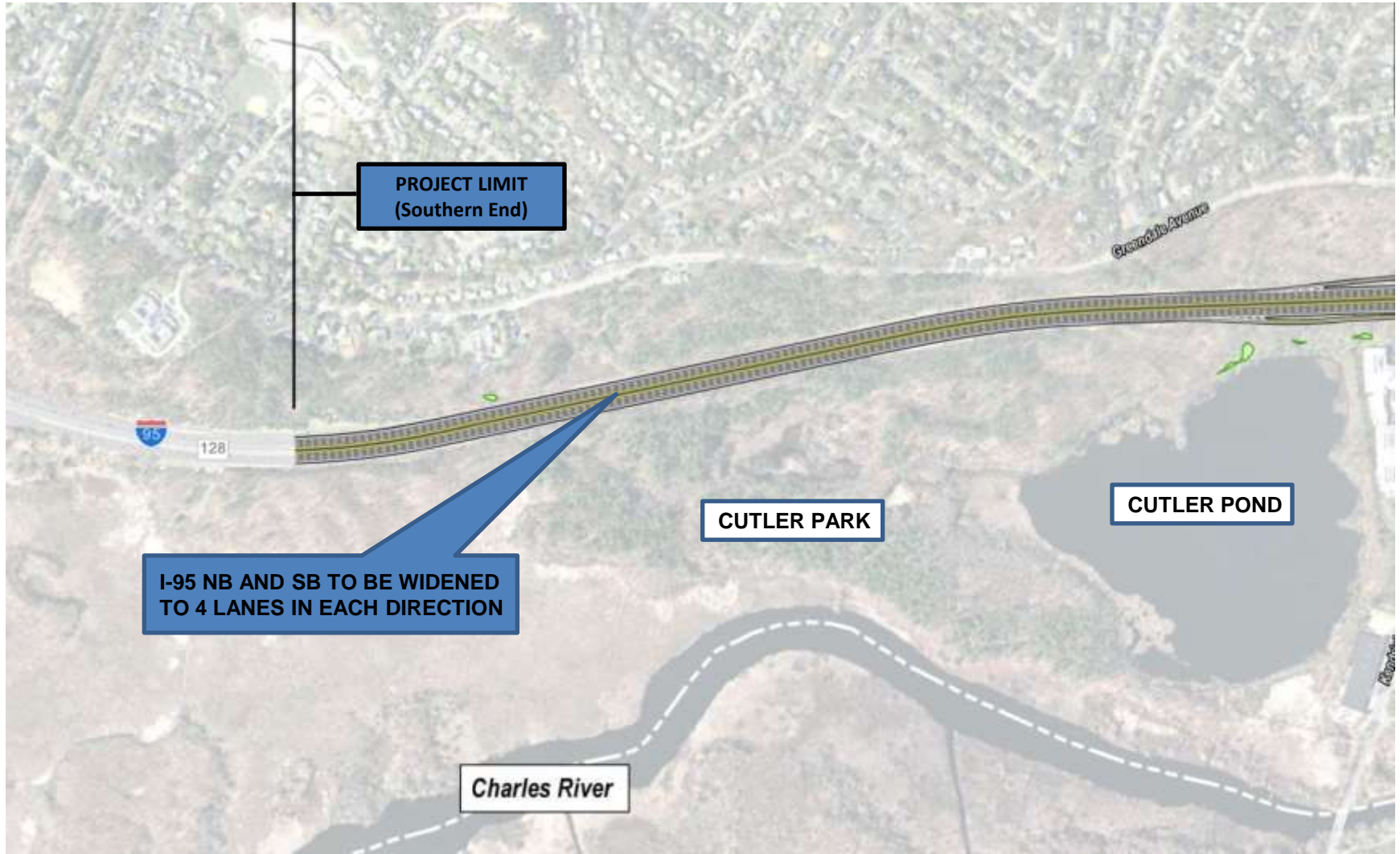
January 2015 Lane Configuration



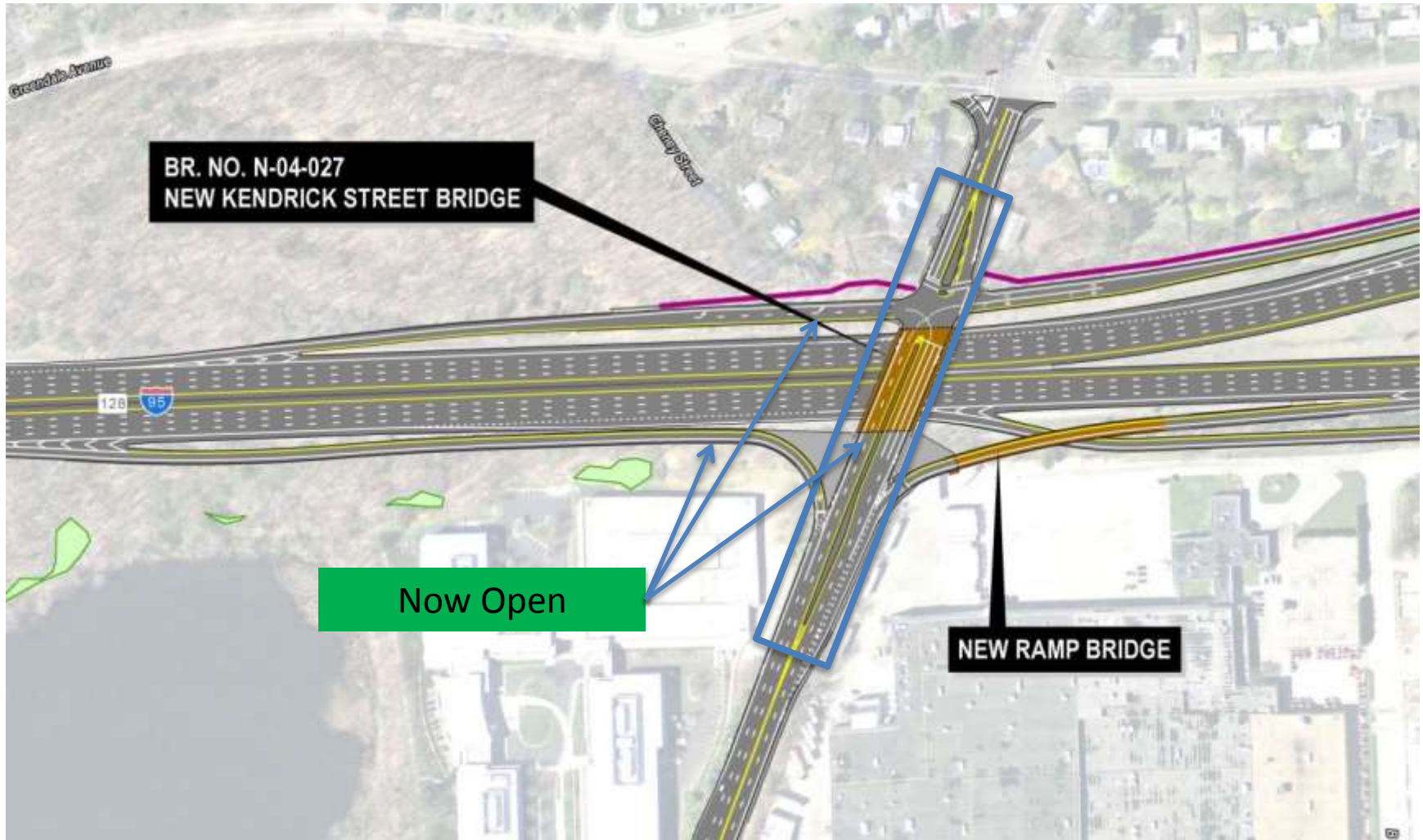
Completed Configuration



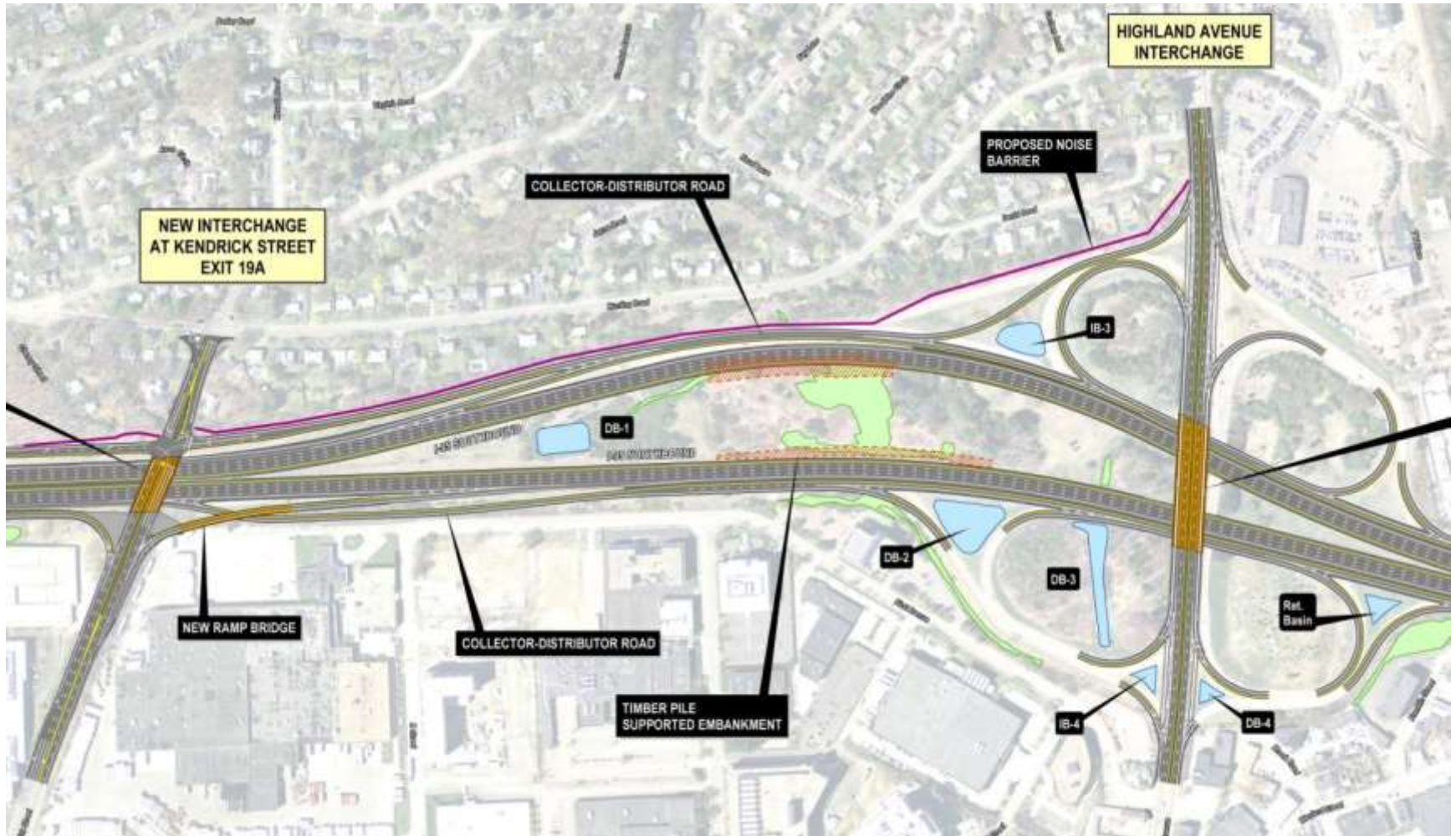
South Project Limit to Kendrick Street



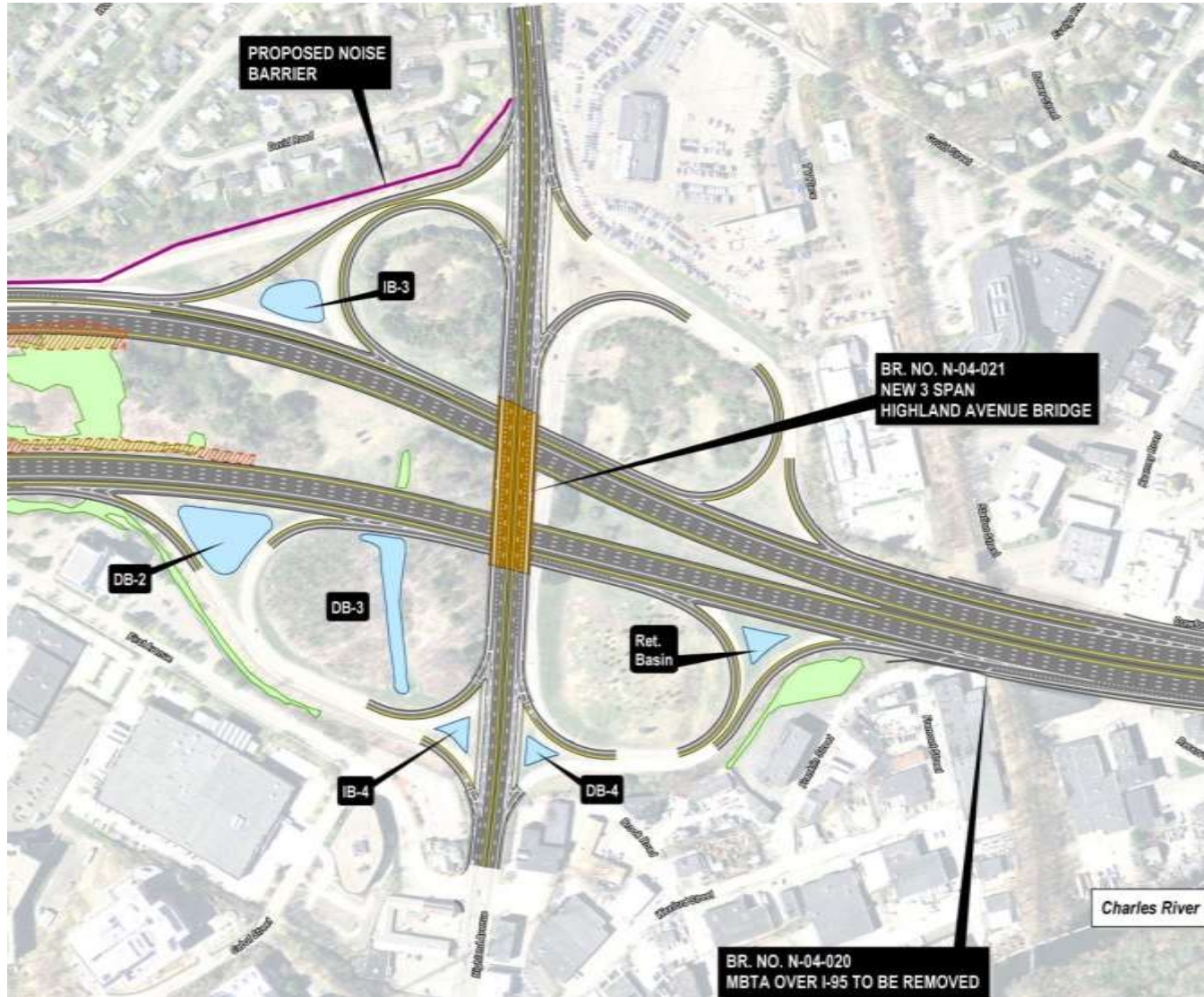
New Kendrick Street Interchange



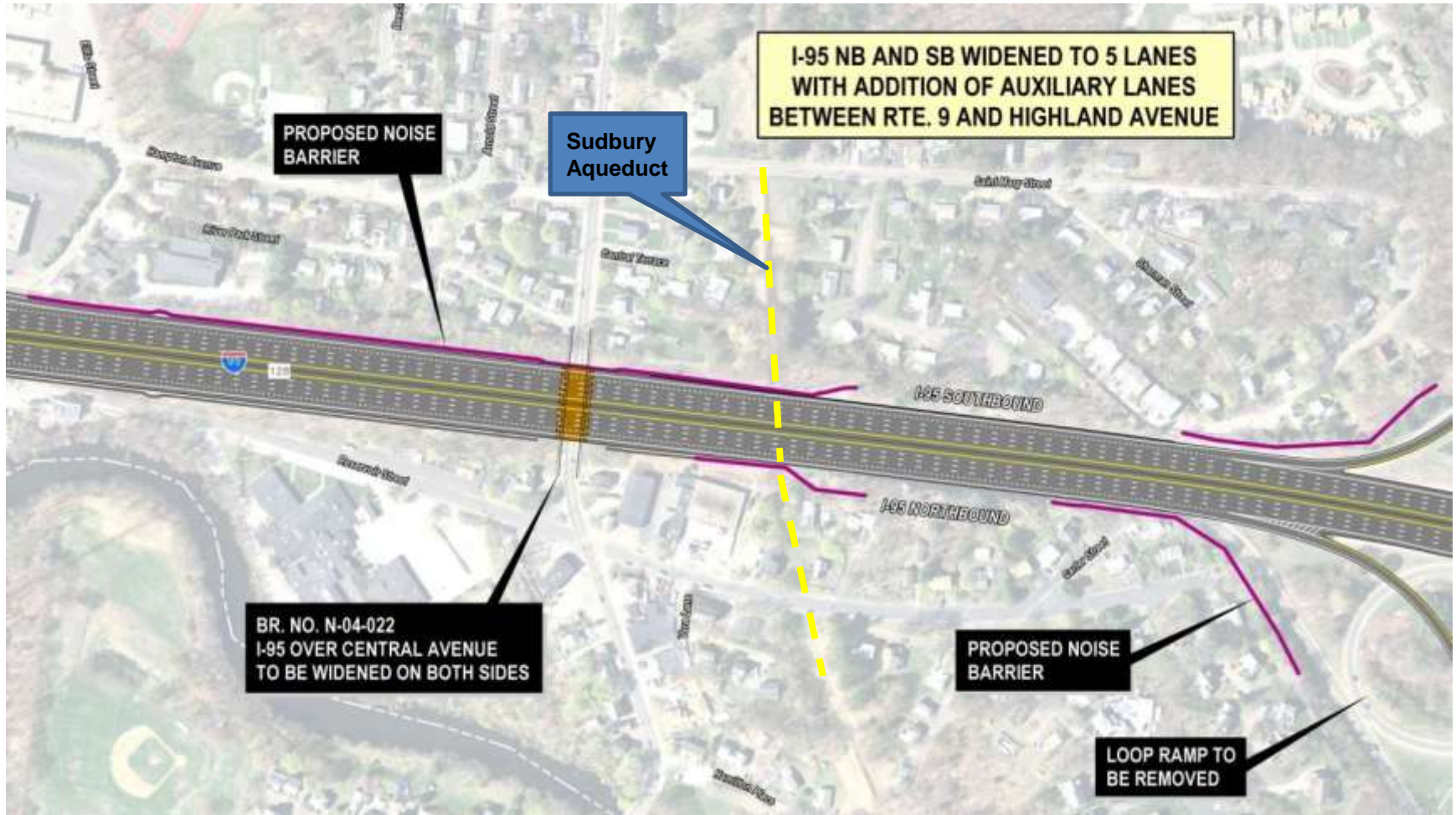
New C/D Roads Between Kendrick Street and Highland Avenue



New Highland Avenue Interchange



New Auxiliary Lanes Between Highland Avenue and Route 9

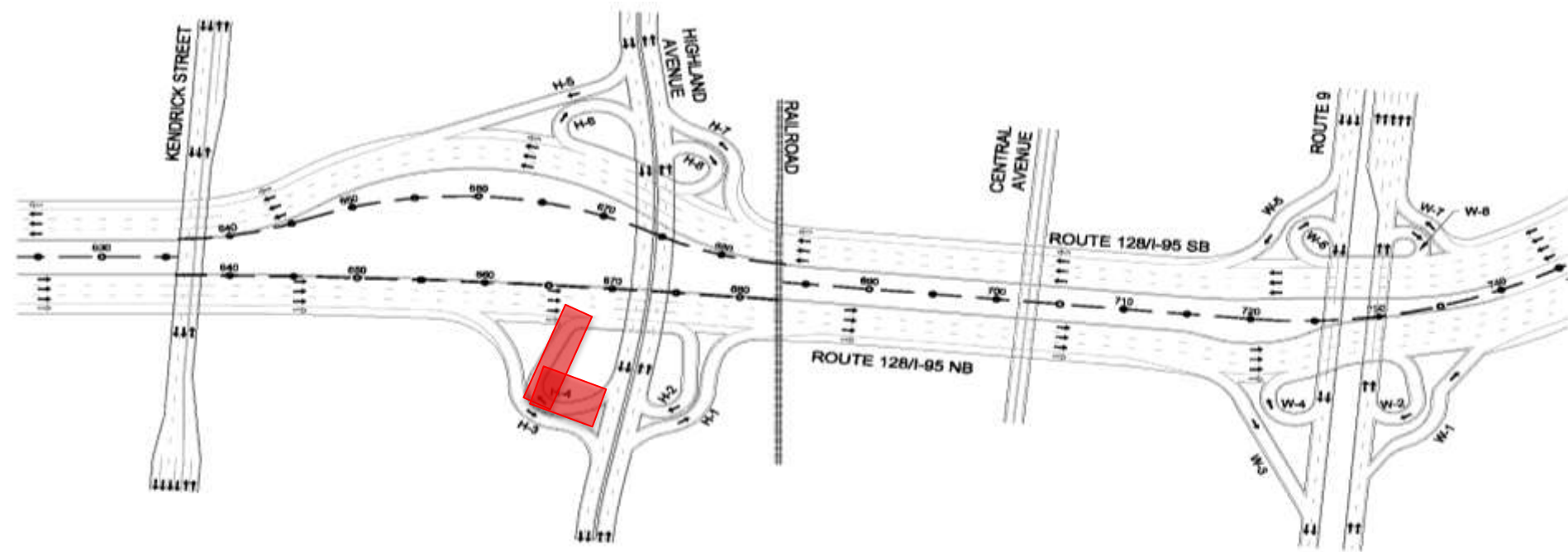


Route 9 Interchange New Pattern Now in this configuration



Highland Avenue to I-95 NB Detour September 23 - 25

Highland Ave to I-95 NB Ramp Closure

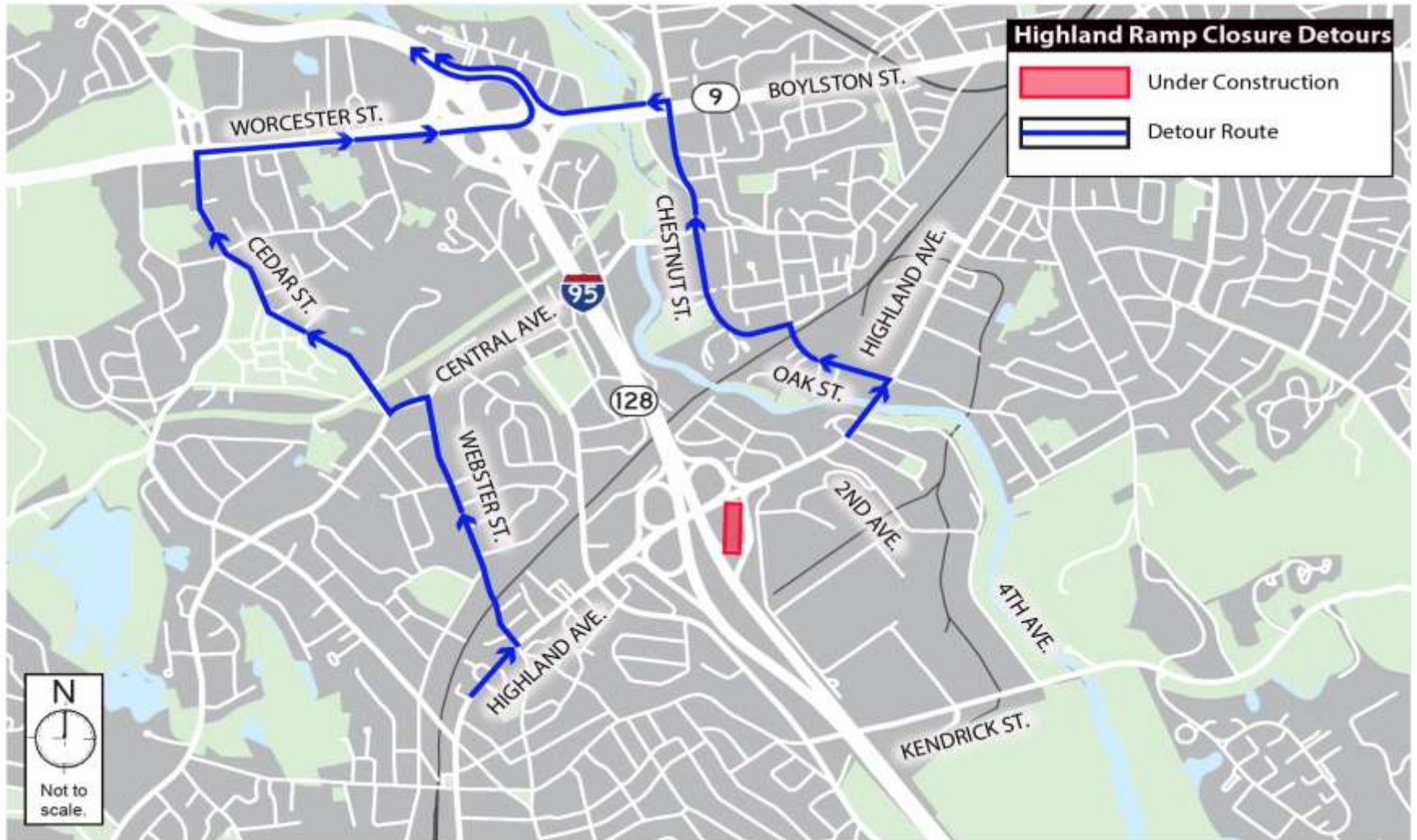


- The ramp denoted in red will be closed as part of this operation

Highland Ave to I-95 NB Ramp Closure

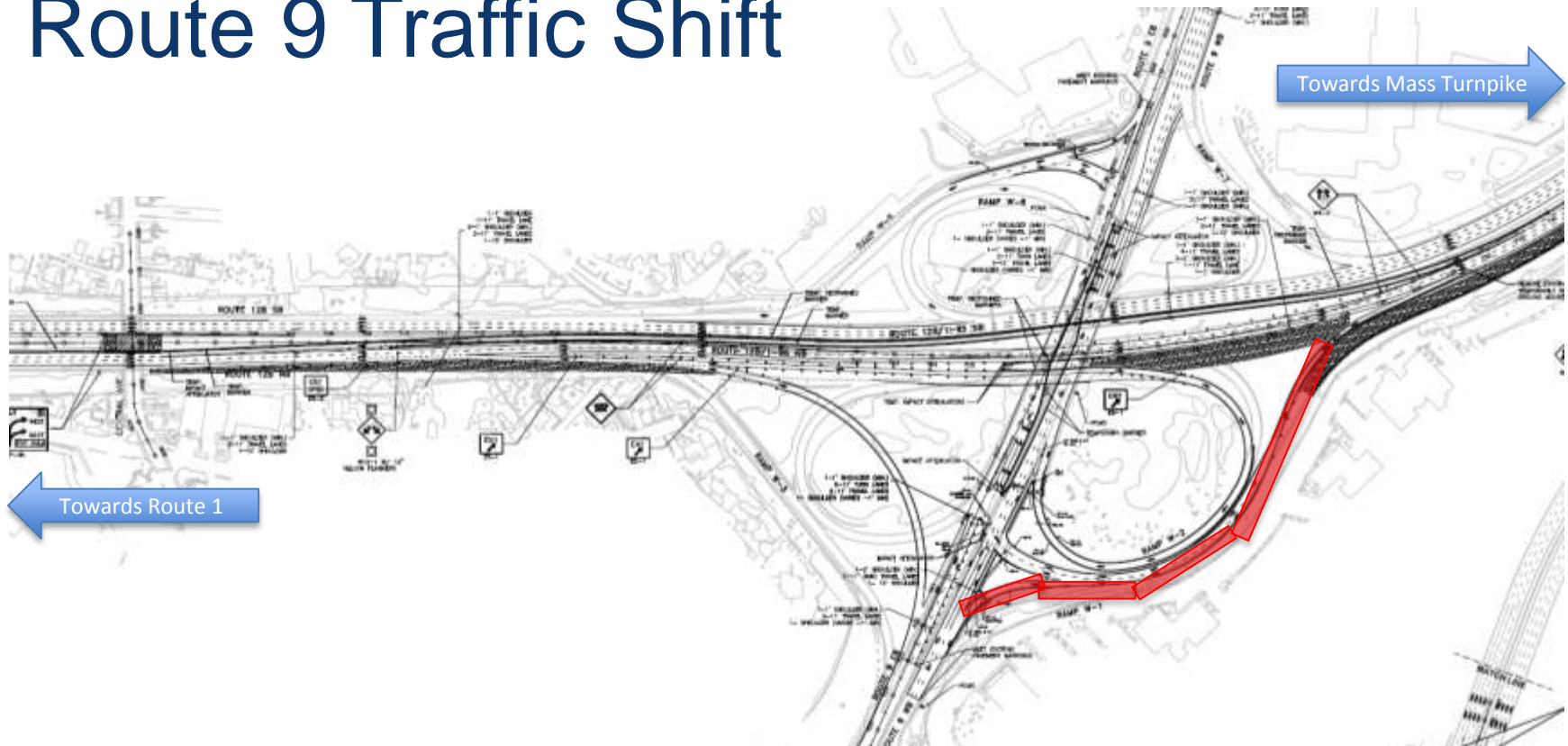
- Weekend Detour of the Ramp
 - 8PM Friday to 8AM Sunday
 - **Shift to the new Highland Ave Bridge will open Saturday night**
- Outreach will include
 - Appropriate signage
 - Police details
 - Media outreach
 - Website/email blast/social media

Highland Ave Eastbound to 95NB



Route 9 Traffic Shift October 15 - 30

Route 9 Traffic Shift

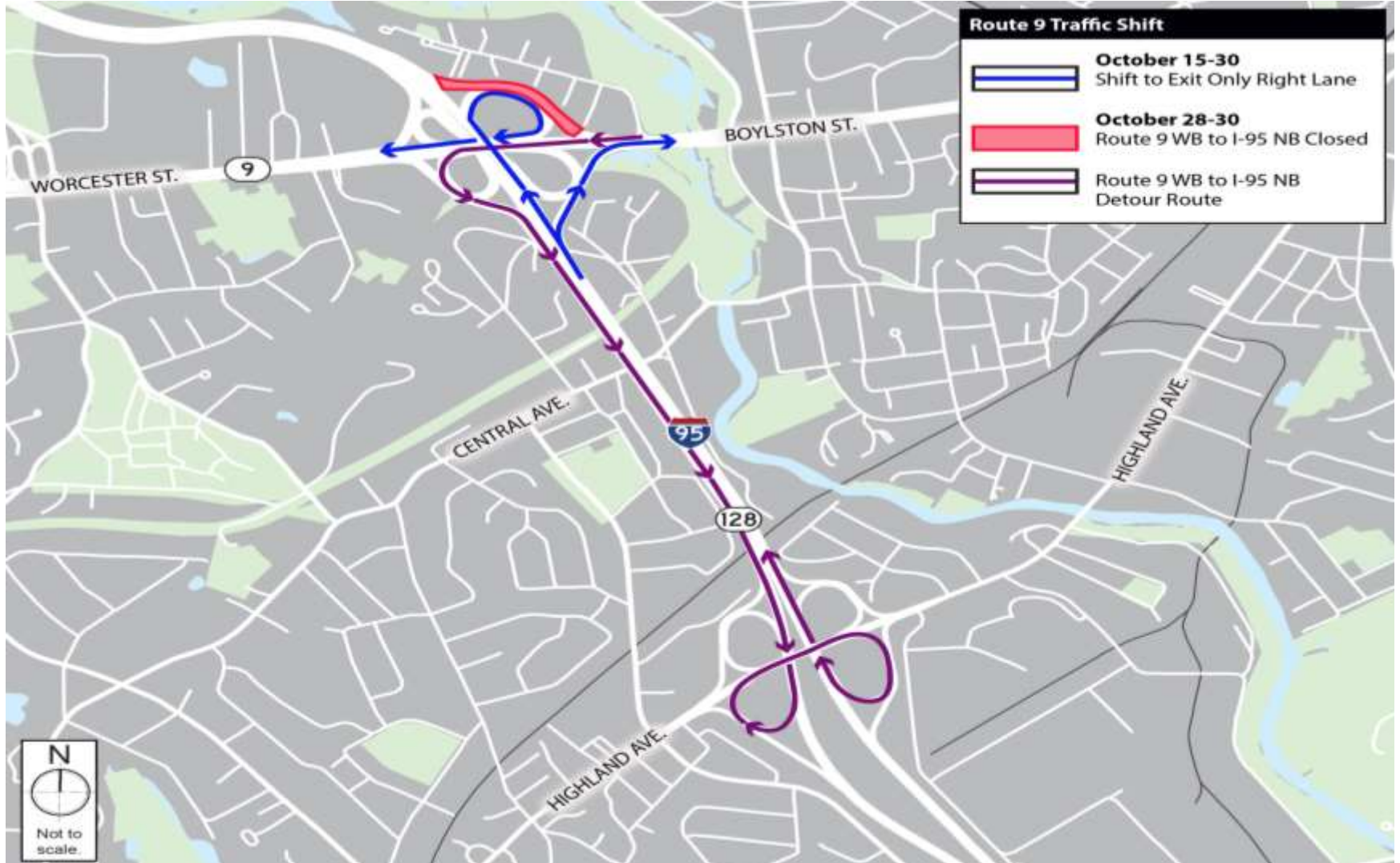


- Full depth excavation, construction, and paving of the mainline and new on-ramp from Rte 9 WB to I-95 NB to occur

Route 9 Shift

- Phase 1 - October 15-30
 - *Exit only* right most Northbound lane of the Rte 9 Bridge
- Phase 2 – Oct 28-30
 - Route 9 WB to I-95 NB Ramp Closure
 - NB I-95 Breakdown Lane Closure
 - To accommodate the work on the mainline and new ramp
 - *8PM Friday to 5AM Monday*
 - **Traffic shift to the newly constructed bridge and on-ramp prior to Monday morning commute**
- Outreach will include
 - Appropriate signage
 - Police details
 - Media outreach
 - Website/email blast/social media
 - Weekend detours

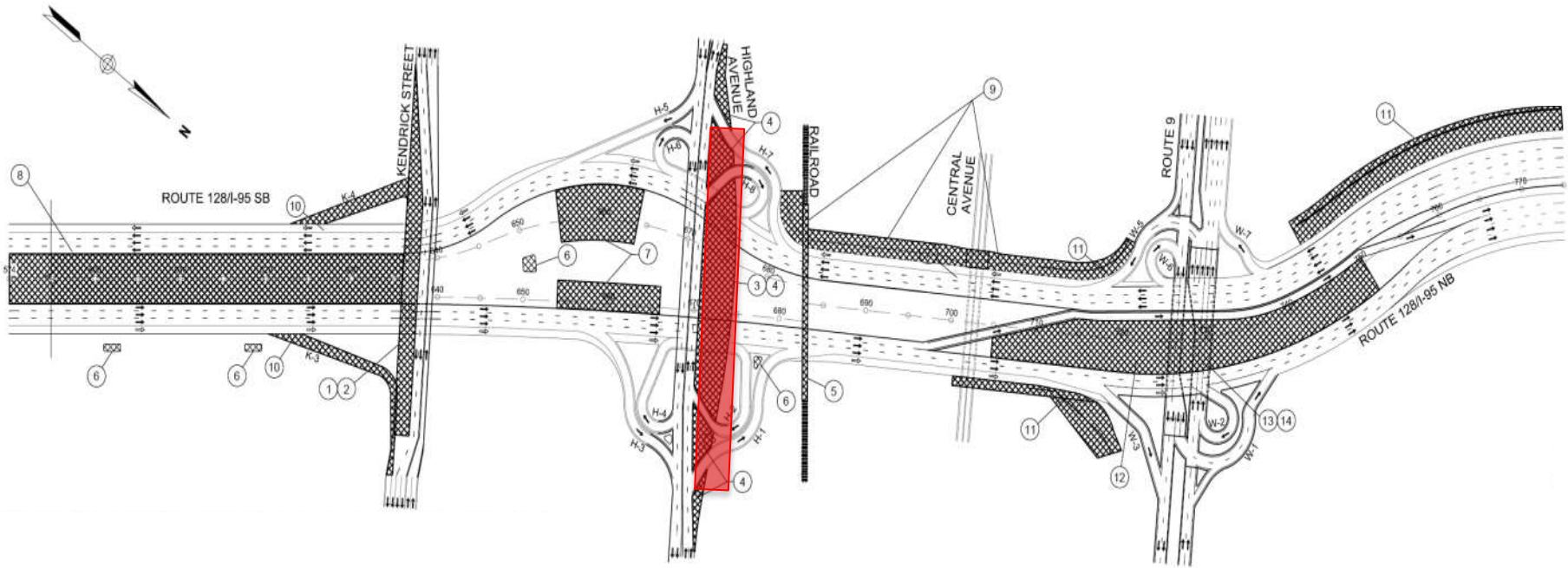
Route 9 Traffic Shift



Highland Avenue Demolition

November 4 - 6

Highland Avenue Demolition



- Old Highland Avenue Bridge:
 - Next to the 1st half of the new bridge
 - Must be demolished for:
 - 2nd half of the bridge in 2016-17
 - Collector/distributor road tie-in in 2018

Demolishing Highland Avenue

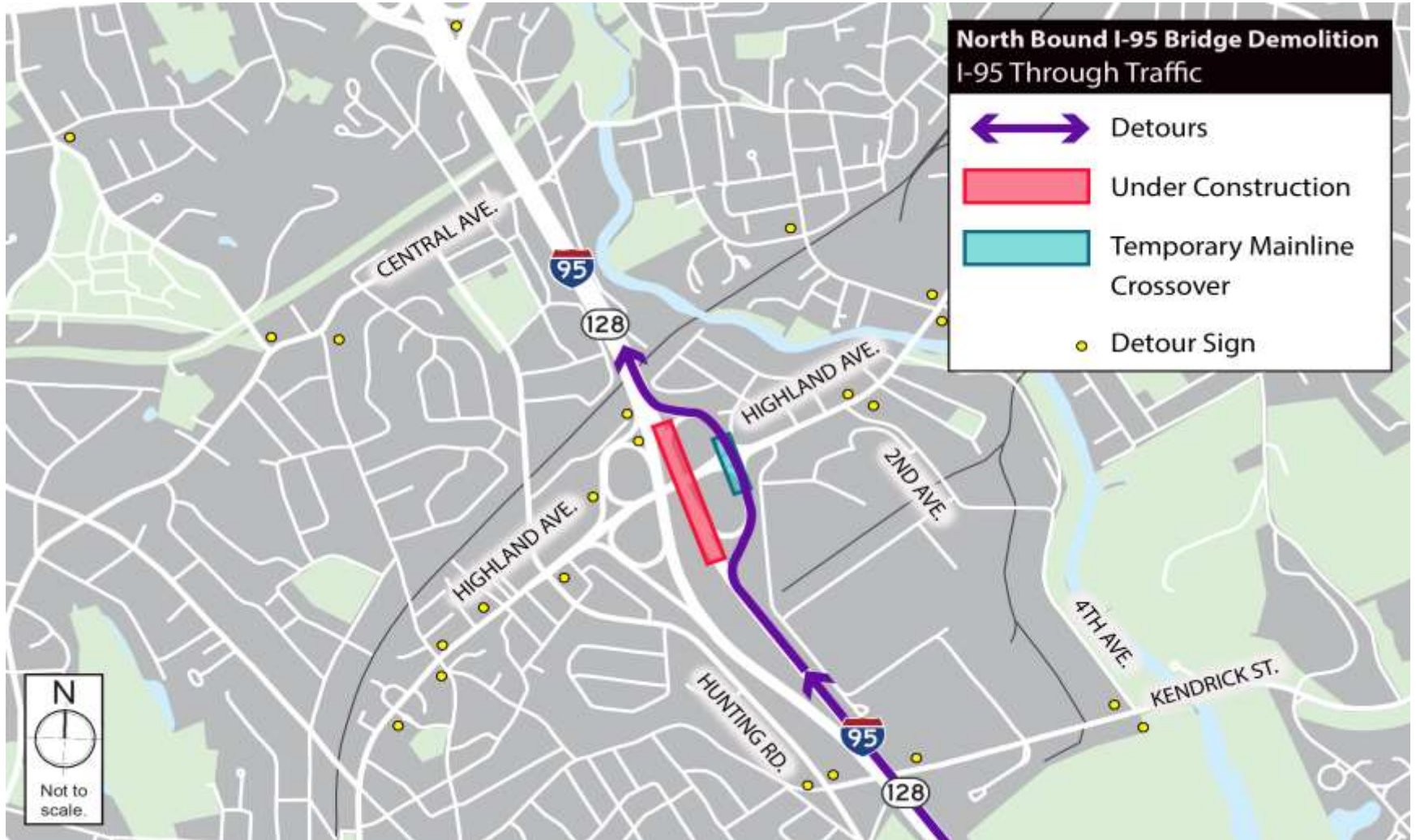
- I-95 under work zone must be detoured
- Single, continuous weekend operation:
 - *November 4-6*
 - *8PM Friday to 5AM Monday*
 - *Highland over 95N first, over 95S second*
 - *Detoured mainline uses temporary ramp-to-ramp connection*
 - ***Old bridge is gone Monday morning***
- What does this mean?
 - Appropriate signage
 - Police details
 - Media outreach
 - Website/email blast/social media
 - *Weekend Detours*

I-95 North Bound Bridge Demolition Detours

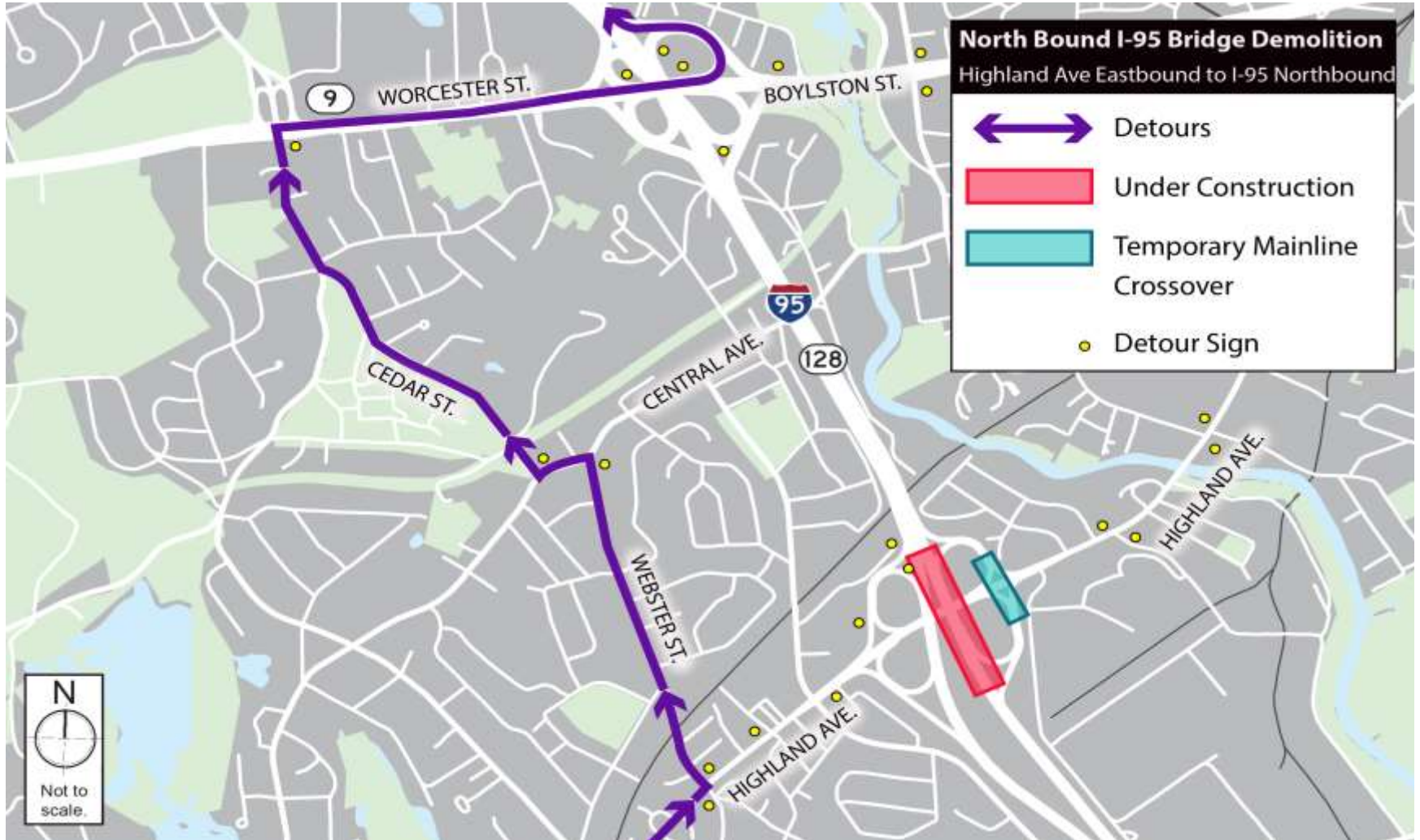
Highland Avenue Local Traffic



95NB to Maintain Mainline Traffic



Highland EB to 95NB



Highland WB to I-95NB & SB



95NB to Highland EB and WB



I-95 South Bound Bridge Demolition Detours

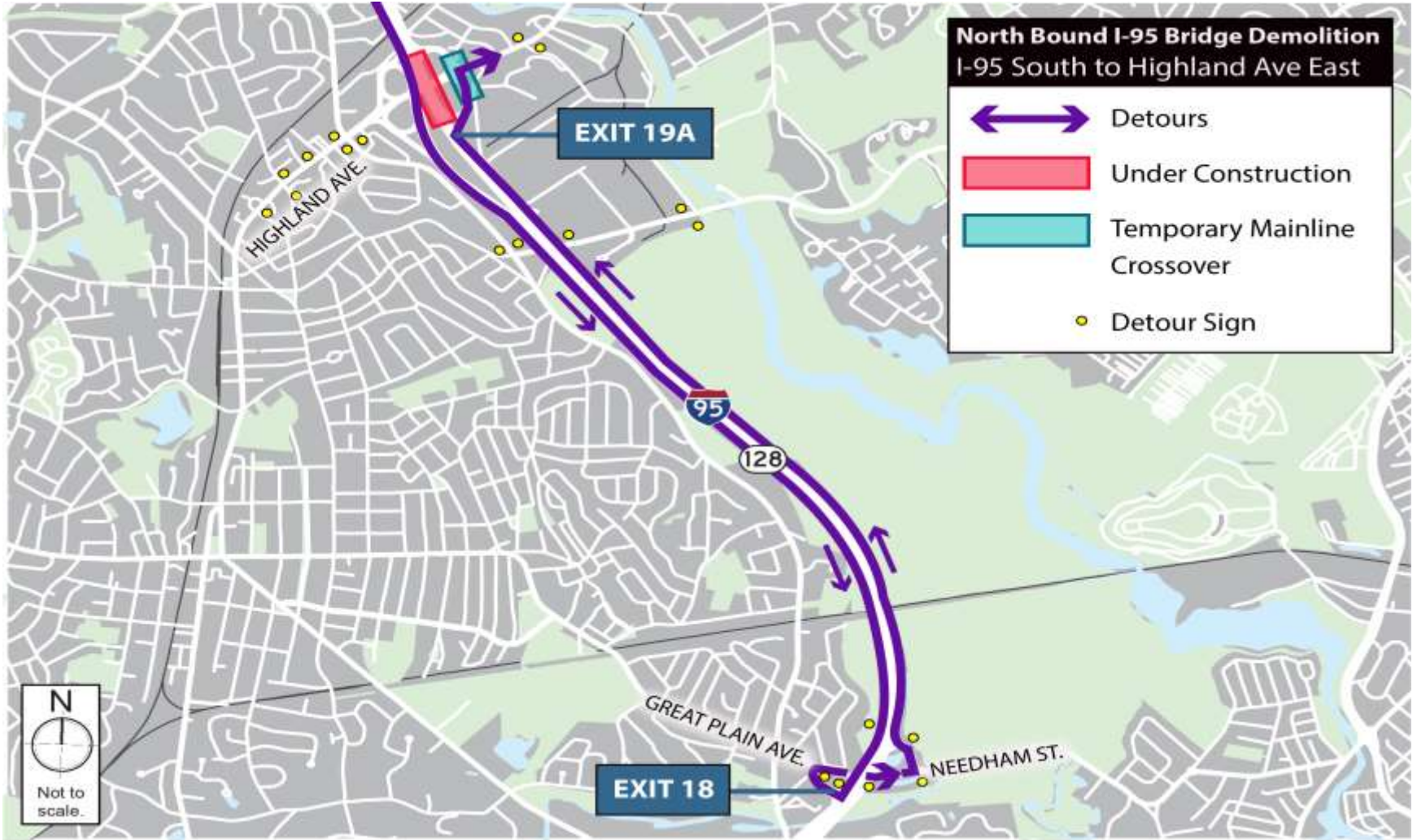
Highland Ave Local Traffic



95SB to Maintain Mainline Traffic

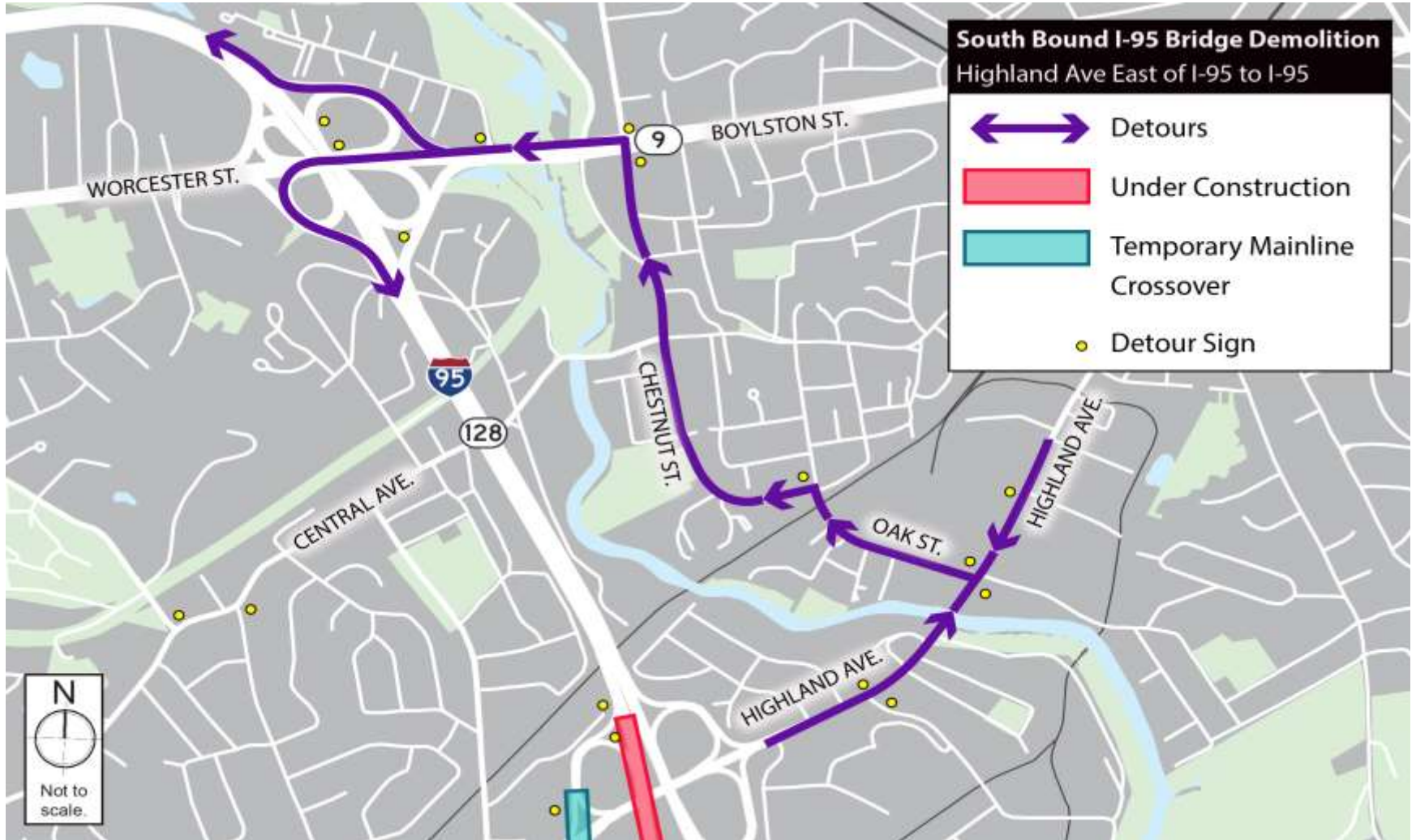


95SB to Highland EB



Highland EB & WB to I95 NB & SB

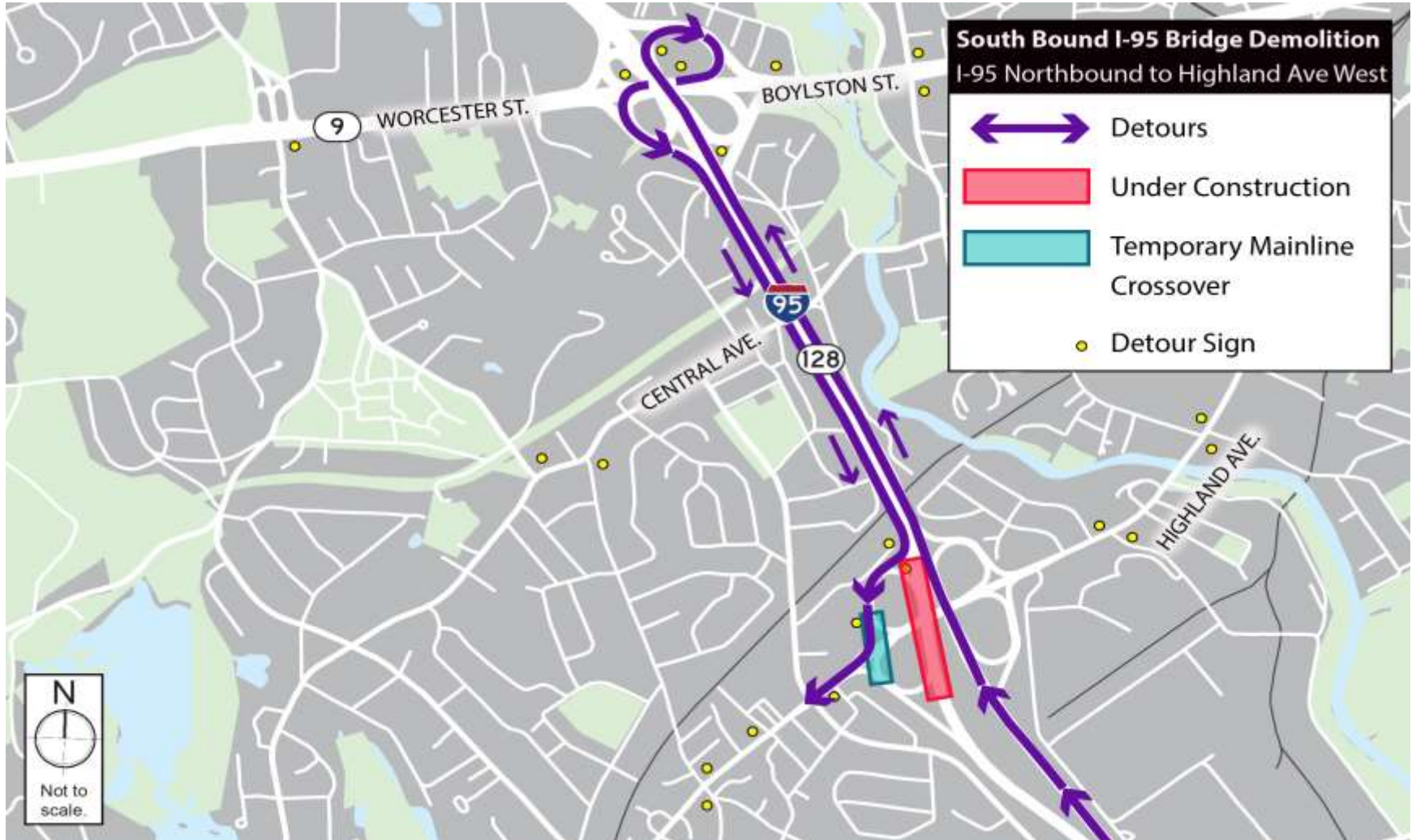
East of I-95



Highland EB & WB to I95 NB & SB West of I-95



I95NB to Highland WB



Staying Informed

Staying Informed

- www.massdot.state.ma.us/highway/HighlightedProjects/NeedhamWellesleyI95AddALane
 - *“Just google Needham Add-a-Lane”*
- Sign up for weekly look ahead emails
- Contact:
Nathaniel Curtis
617-482-7080 x236
ncabral-curtis@hshassoc.com

Questions?